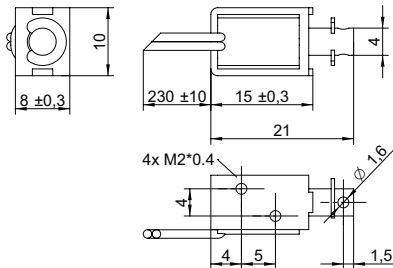


DRAWING (mm)



PHOTO



MODEL NO. DESIGNATION

F0415L - VOLTAGE

Example: F0415L-03V

ACCESSORIES

● C = customizations are offered on demand even for smaller quantities. Typical customizations are indicated with a green dot at column end. Please contact us for any customization request.

SOLENOID DATA

	%	100	50	25	10
Duty cycle					
Power	W	0.8	1.6	3.2	8
Max. time in energized state	s	∞	50	18	3

PERFORMANCE DATA F0415L-03V

	%	100	50	25	10
Duty cycle					
Individual voltages	V	3	4.2	6	9.5
Resistance	Ω	11			

PERFORMANCE DATA F0415L-06V

	%	100	50	25	10
Duty cycle					
Individual voltages	V	6	8.5	12	19
Resistance	Ω	45			

PERFORMANCE DATA F0415L-12V

	%	100	50	25	10
Duty cycle					
Individual voltages	V	12	17	24	38
Resistance	Ω	180			

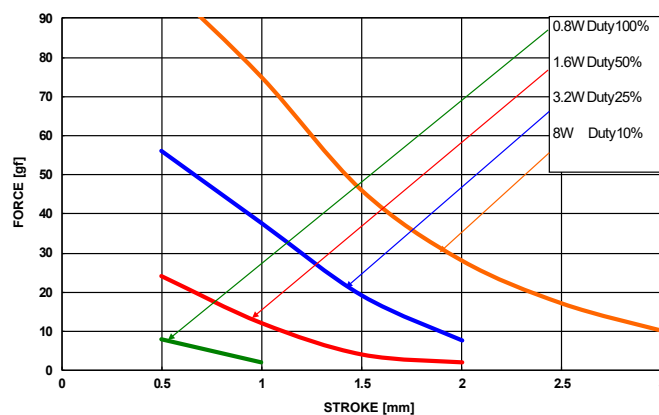
PERFORMANCE DATA F0415L-24V

	%	100	50	25	10
Duty cycle					
Individual voltages	V	24	34	48	76
Resistance	Ω	720			

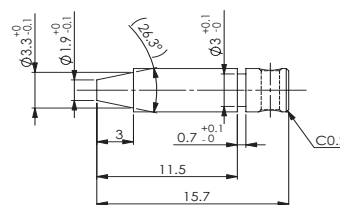
SOLENOID FEATURES AND STANDARD DATA

Type	Pull type DC solenoid		●
Nominal voltage range ¹	V	3 to 24	●
Loading force ²	N	0.034	
Cable	Flying wires		●
Cable length	mm	230	
Service life	At least 500000 single strokes		
Return spring	Yes		
Plunger material	Carbon steel 12L14		
IP rating	IP00		
Insulation class	B		
Weight	g	5.4	
Operating temperature	°C	-5 to 40	
Manufacturing standard	ISO9001:2008 ISO/TS 16949:2002		
CE label UL label	No No		

PERFORMANCE GRAPH



PLUNGER PROFILE



NOTES

- Nominal voltages, 100 % duty cycle.
- At 3.5 mm compression.